



Vaccines and Community Health: ***Strengthening Protection and Trust***

Roli Dwivedi, MD, FAAFP, DABFM + Lynne Ogawa, MD

Learning Objectives



- Examine the Impact of Vaccination on Community Health – Explore the role of vaccines in preventing disease outbreaks, reducing healthcare burdens, and improving overall public health outcomes.
- Enhance Strategies for Building Vaccine Confidence – Identify effective communication approaches to address vaccine hesitancy, strengthen patient-provider trust, and promote informed decision-making within diverse communities.

About CUHCC



About CUHCC



2024

- 11.9K unique patients
- ~50K annual visits
- ~170 FTE & 185 learners



About our communities



2024 Federal Summary Report



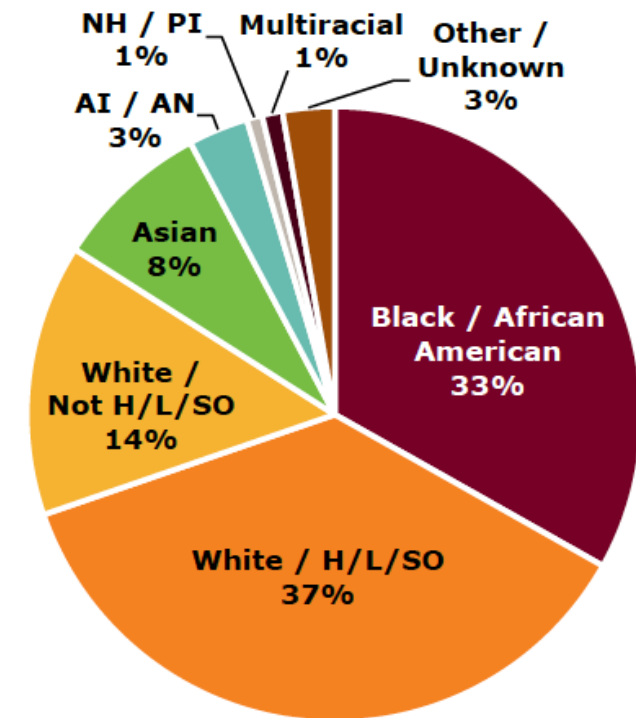
COMMUNITY-UNIVERSITY
HEALTH CARE CENTER

UNIVERSITY OF MINNESOTA

Driven to Discover®

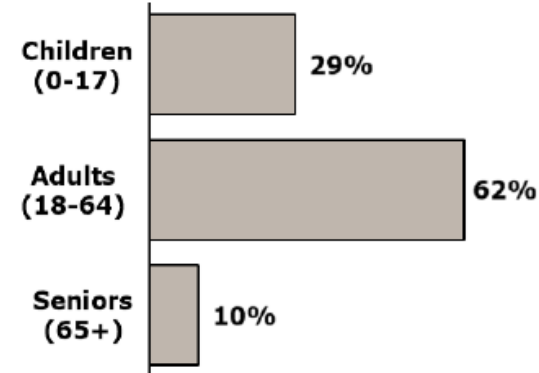
Patient Demographics

Race / Ethnicity



38% of Patients Identify as Hispanic / Latino/a / Spanish Origin

Age



Language

53% of Patients Preferred a Language Other Than English

57 Languages Spoken

TOP 3

1. English 47%
2. Spanish 32%
3. Somali 10%

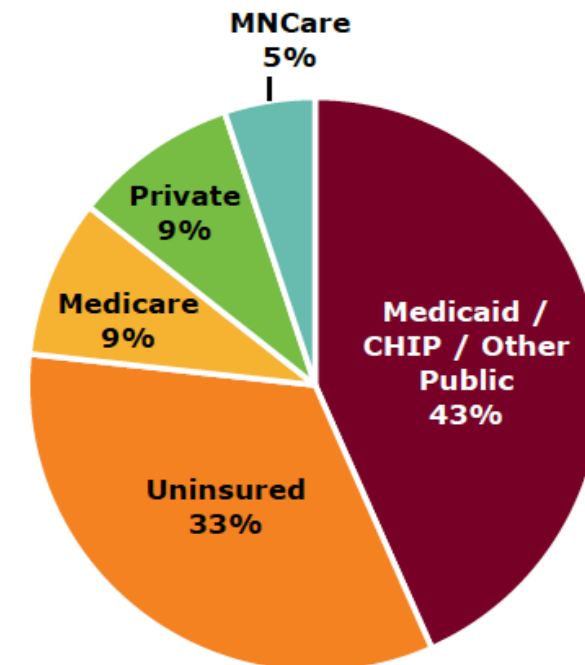
Patients

11,909

Visits

49,225
(14% Virtual)

Insurance



Protecting public health and Building Trust



- In 2020, University of Minnesota launched a multi-agency Disparities in COVID Response Task Force that developed a coordinated, community-informed effort to provide Covid vaccination, education and testing to diverse cultural, ethnic and religious communities, with an emphasis on East African population.

Protecting public health and Building Trust



- **Primary Aim:**

To reach and vaccinate community members before Ramadan commenced in 2021.

- **Secondary Aim:**

To build confidence in the COVID vaccine within the BIPOC Communities.

Protecting public health and Building Trust



- Outreach and engagement with community and religious leaders.
- Online and in-person education sessions about vaccine and testing
- Information dissemination through partnerships with local Somali TV, Somali BBC, latino media, Facebook Live and radio shows.
- Community outreach to develop relationships with trusted community organizations.
- Leadership and decision-making by community organizers and faith leaders in all aspects of vaccine events: registration process, outreach methods, types of vaccine to administer, location and

Protecting public health and Building Trust



- Clinic-based group vaccination event with 16 faith leaders from East African communities to promote the importance, safety and religious acceptance of the vaccine.
- On-site testing in public housing high rise apartment buildings with community liaisons who served as navigators and liaisons to CUHCC's primary care services.
- Vaccinations among **150** East African residents living in Seward Neighborhood before the Ramadan 2021.
- Partnerships with organizations, charter schools, and businesses (e.g., Latino Mercado and Somali Mall) that serve immigrant and refugees populations, resulting in **11** community-based vaccine events designed to overcome access, language and transportation biggest barriers.
- **800** COVID vaccines administered in community settings and **10,100** vaccines administered at CUHCC.

Protecting public health and Building Trust



- Aug 2021 - Feb 2022: Millions of Afghans displaced due to violence and instability in Afghanistan.
- 1,260 evacuees resettled in Minnesota (MN)
- Increased risk of covid and other illnesses
- No understanding of medical system in new country
- Significant SDOH
- Oct 15 - Dec 31, 2022: 1,500 patient encounters at CUHCC

Protecting public health and Building Trust

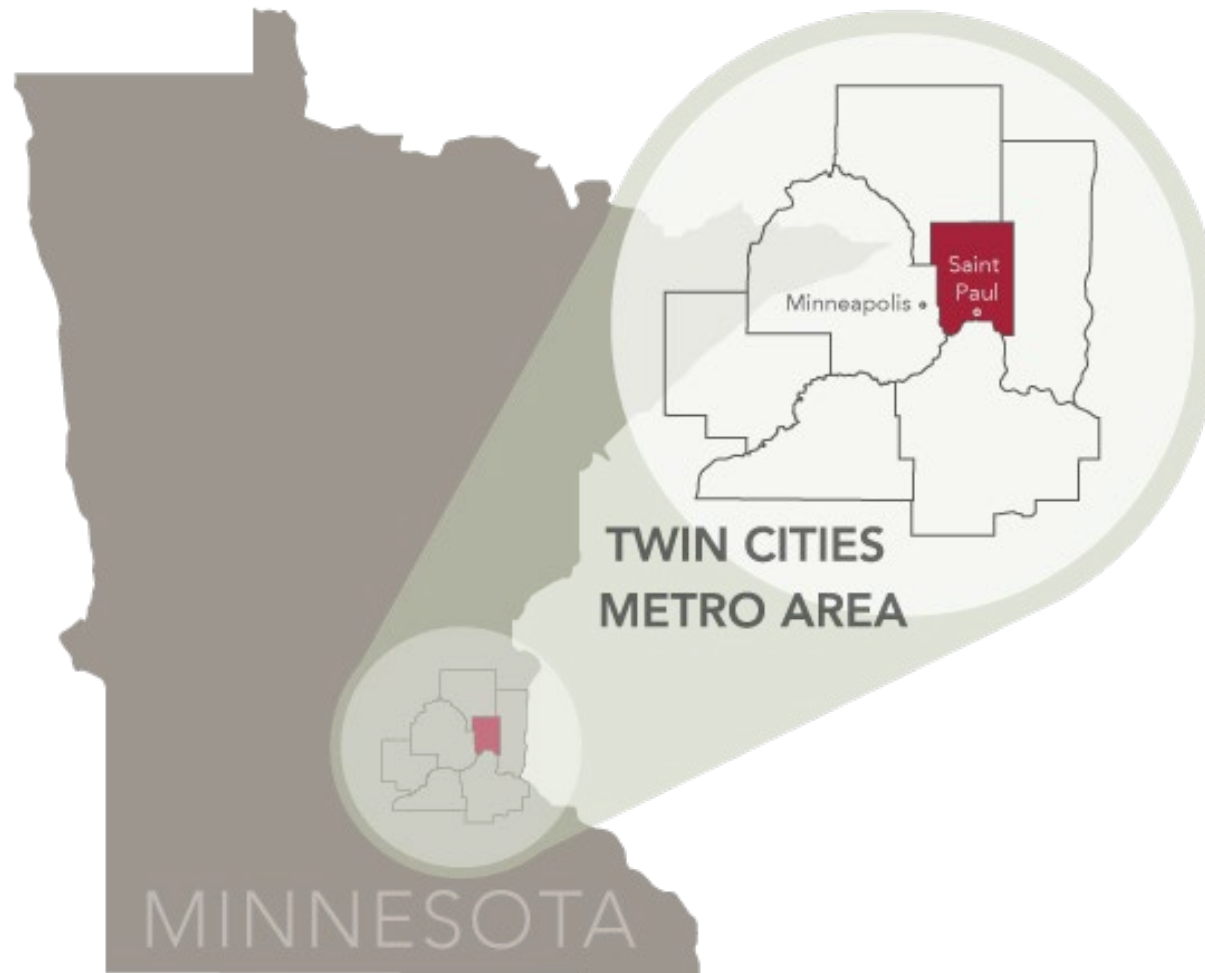


- **Afghan response team was created**
 - Community outreach workers
 - Patient navigators
 - Interpreters For Dari and Pashto
- **Assigned case managers** to each family via resettlement agencies. Helped them navigate through the integration process
- **Coordinated transportation and interpreters** for medical visits.
- **CUHCC Clinic staff educated and trained** on refugee-specific healthcare.
- **Established workflow process** for comprehensive Refugee Health Screenings
- **Partnered with other organizations-** MDH,DHS and MHI

Protecting public health and Building Trust



Ramsey County

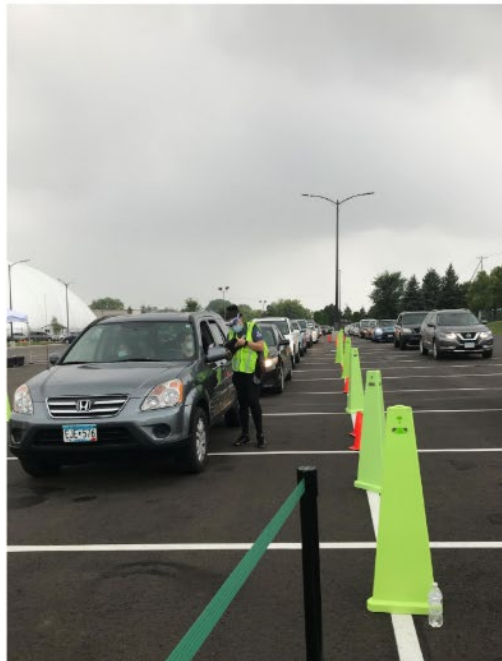


- Population just over 550,000
- Second most populous county
- Smallest geographically
- Racially and ethnically diverse
 - 40% identify as non-white/non- Hispanic
 - 16% identify as foreign born
 - 23% identify language other than English spoken at home



Covid in Ramsey County

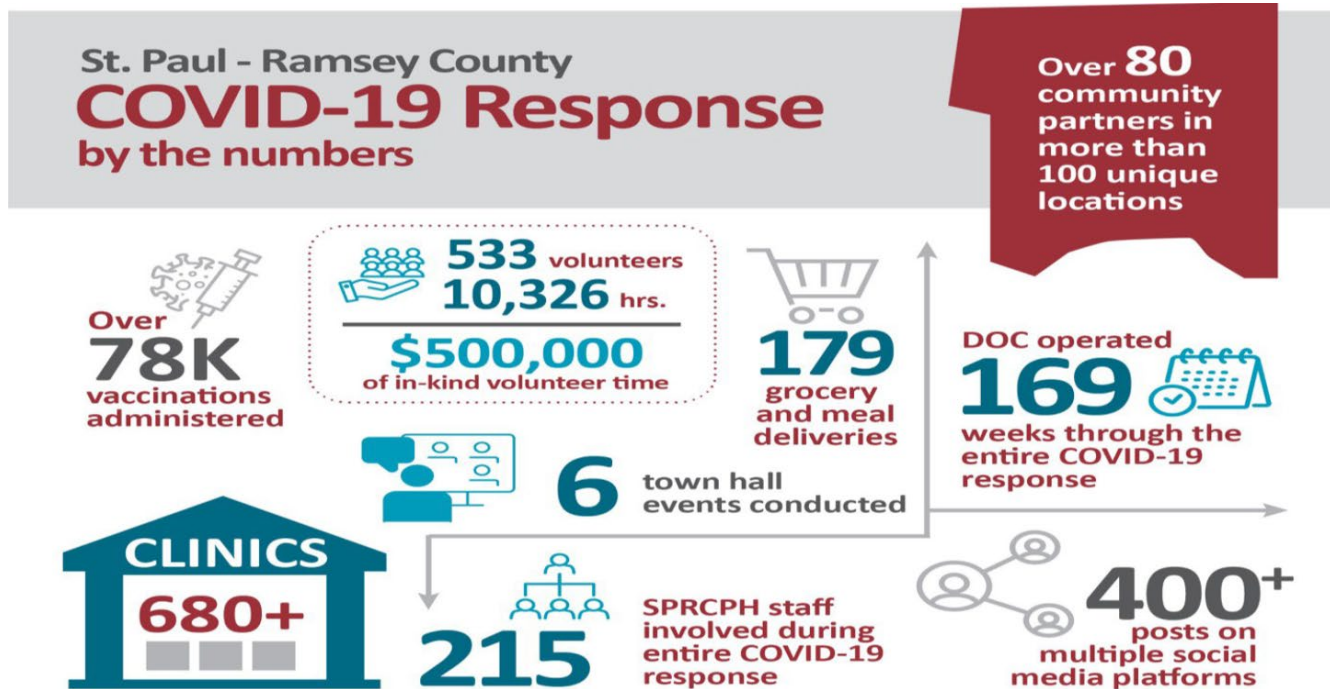
- First reported case in MN – Ramsey County – 3/6/2020
- Most densely populated county
- High number of low wage essential workers without access to testing
- Data quickly emerging about BIPOC communities having more serious outcomes and higher rates i.e. Hmong community



Community Testing

- Began June 9, 2020
- Aldrich Arena, Jimmy Lee, Washington Tech
- Partners – M Health Fairview, Black Nurses Rock
- Between August and November, we did 13,998 Covid tests

Our Focus during and after the pandemic



- Prioritize vulnerable communities disproportionately impacted by the pandemic.
- Address systemic inequities that COVID-19 exposed and worsened.
- Support essential services while also fostering economic recovery and opportunity.

Trusted Messenger

Public Health Initiative



- A community engagement model that partners with local organizations to share public health resources with communities who are most impacted by health inequalities
- We offer health experts, supportive services, and health resources as well as direct program funding for community organizations
- Began with Covid-19 but now includes Clinical Services (TB, Sexual Health, Vaccines), Climate Action, Environmental Health, Family Health, Health Protection, Healthy Communities, and WIC

Current project related to MMR

- Working with one of our trusted messengers who is a Somali speaking practitioner
- The community remains very wary of the MMR vaccine
- There have been lots of attempts at focusing on the vaccine met with fair results
- We are working with her to create videos about the disease itself – signs and symptoms, to begin to work to build a more open relationship
- We also want to focus on early identification and isolation as well as travel when unvaccinated being one of the greatest risks